

## Real Estate Taxes (Code 011010)

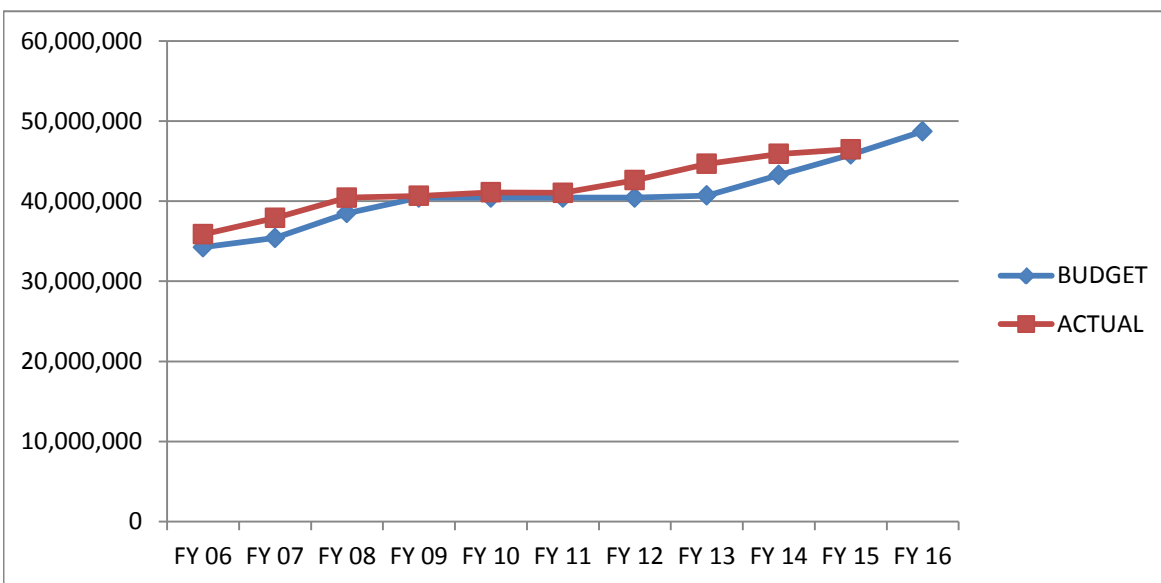
		Collected/Budgeted Growth
Collected FY 12	42,606,568	
Collected FY 13	44,657,302	4.81%
Collected FY 14	45,894,828	2.77%
Collected FY 15	46,468,442	1.25%
Budgeted FY 16	48,700,823	4.80%

## Projected FY 2016

2015 RE Tax book	46,339,916
2015 Supplements	228,857
Average Delinquents Collected	<u>1,000,000</u>
	47,568,773
Budgeted FY 16	48,700,000
Anticipated Budgeted Revenue shortfall	<u>-1,131,227</u>

## 10 Year History

	Budgeted	Actual
FY 06	34,234,074	35,854,876
FY 07	35,400,000	37,887,378
FY 08	38,500,000	40,430,000
FY 09	40,430,000	40,649,344
FY 10	40,430,000	41,096,404
FY 11	40,430,000	41,030,006
FY 12	40,430,000	42,606,568
FY 13	40,700,000	44,657,302
FY 14	43,250,000	45,894,828
FY 15	45,800,000	46,468,442
FY 16	48,700,823	



# Personal Property ( Code 011030)

	Collected/Budgeted Growth
Collected FY 12	36,343,378
Collected FY 13	37,183,849 2.31%
Collected FY 14	39,010,198 4.91%
Collected FY 15	41,327,007 5.94%
Budgeted FY 16	42,887,250 3.78%

Proposed FY 17

Increase in FY 17 Budget:

Proposed FY 17

Budgeted FY 16

6.00%	43,806,627
6.00%	46,435,025

Current level of growth

Revised FY 16 Projection

46,435,025

42,887,250

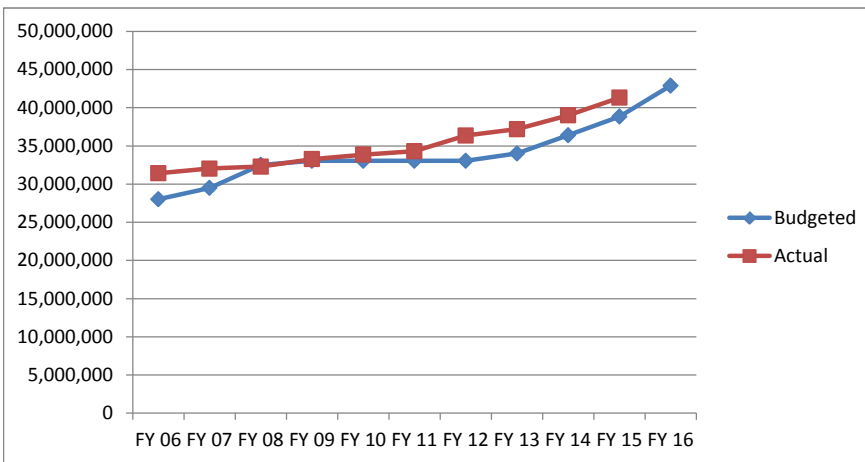
3,547,775

2015 PP Book	40,097,857
2015 Supplements	4,114,443
	44,212,300
Budgeted FY 16	42,887,250
FY 16 Unbudgeted revenue	1,325,050

Does not include delinquent taxes of approximately 1 million or abatements

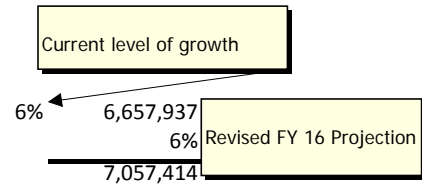
## 10 Year History

	Budgeted	Actual
FY 06	28,000,000	
FY 07	29,500,000	31,426,877
FY 08	32,500,000	32,030,634
FY 09	33,050,000	32,292,963
FY 10	33,050,000	33,270,229
FY 11	33,050,000	33,863,701
FY 12	33,050,000	34,291,949
FY 13	34,000,000	36,343,378
FY 14	36,393,379	37,183,849
FY 15	38,850,000	39,010,867
FY 16	42,887,250	41,327,007



## Machinery and Tools (011040)

		Collected/Budgeted Growth
Collected FY 12	4,803,594	
Collected FY 13	5,496,350	14.42%
Collected FY 14	5,609,805	2.06%
Collected FY 15	6,281,073	11.97%
Budgeted FY 16	5,500,000	-12.44%



Increase in FY 17 Budget:

Proposed FY 17

Budgeted FY 16

7,057,414

5,500,000

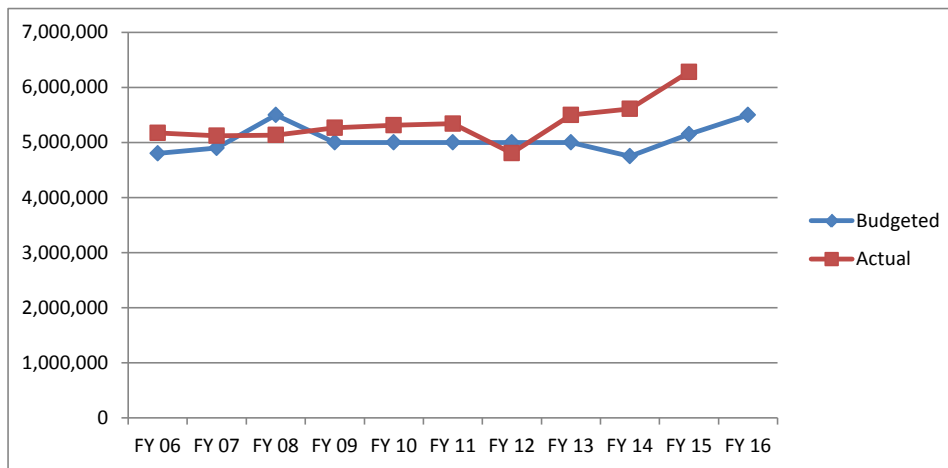
1,557,414

2015 MT Book

6,537,374

## 10 Year History

	Budgeted	Actual
FY 06	4,800,000	5,170,936
FY 07	4,900,000	5,121,787
FY 08	5,500,000	5,134,316
FY 09	5,000,000	5,265,724
FY 10	5,000,000	5,313,137
FY 11	5,000,000	5,339,246
FY 12	5,000,000	4,803,594
FY 13	5,000,000	5,496,350
FY 14	4,750,000	5,609,805
FY 15	5,150,000	6,281,073
FY 16	5,500,000	



## Local Sales Tax (012010)

		Collected/Budgeted Growth
Collected FY 12	10,516,914	
Collected FY 13	11,039,176	4.97%
Collected FY 14	12,081,490	9.44%
Collected FY 15	12,190,553	0.90%
Budgeted FY 16	13,067,339	7.19%

Current level of growth

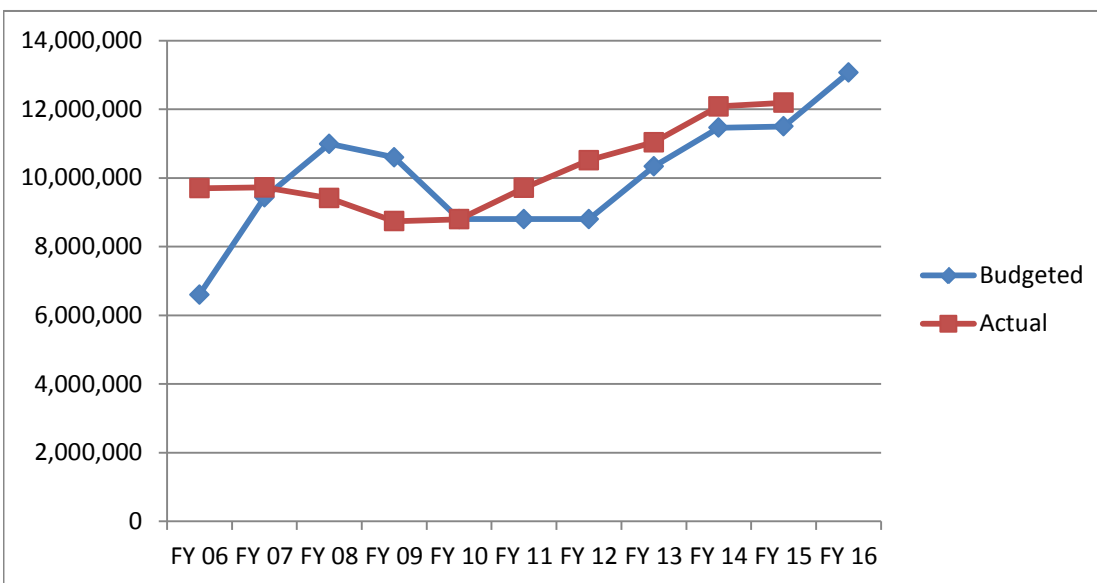
3.67%      12,637,946  
 3.67%  
13,017,085

Decrease in FY 17 Budget:

Proposed FY 17      13,017,085  
 Budgeted FY 16      13,067,339  
-50,254

## 10 Year History

	Budgeted	Actual
FY 06	6,600,000	9,698,878
FY 07	9,430,852	9,723,092
FY 08	10,991,656	9,409,851
FY 09	10,600,000	8,738,001
FY 10	8,800,000	8,794,212
FY 11	8,800,000	9,711,110
FY 12	8,800,000	10,516,914
FY 13	10,335,682	11,039,176
FY 14	11,462,440	12,081,490
FY 15	11,500,000	12,190,553
FY 16	13,067,339	



## Business License (012030)

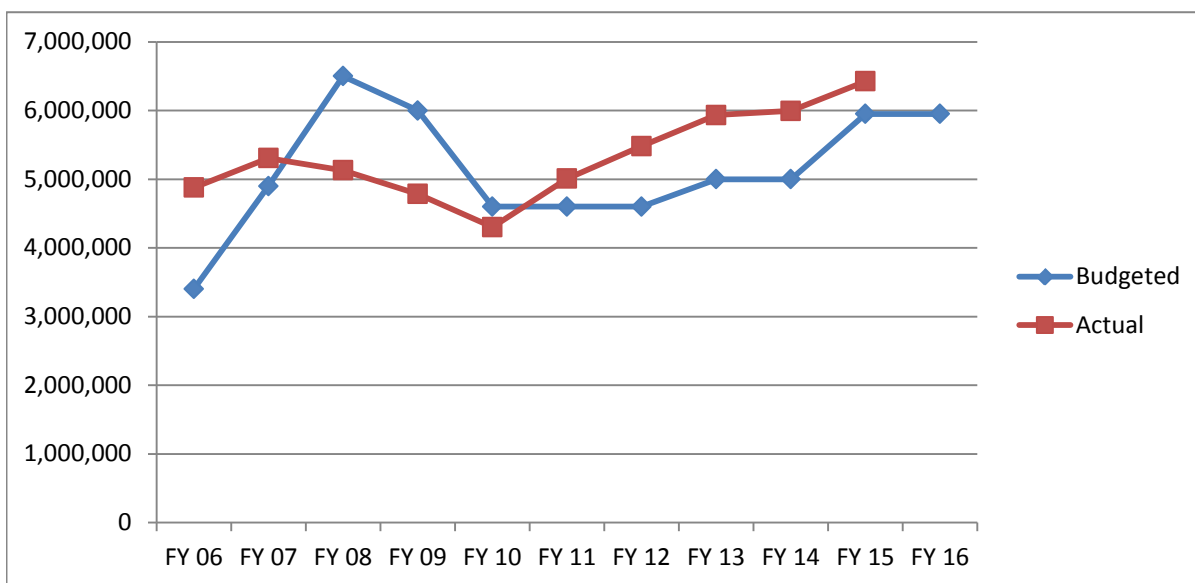
		Collected/Budgeted Growth	
Collected FY 12	5,482,143		
Collected FY 13	5,937,867	8.31%	
Collected FY 14	5,993,996	0.95%	Current level of growth
Collected FY 15	6,426,611	7.22%	
Budgeted FY 16	5,950,000	-7.42%	6% ← 6,812,208
			6%
			<u>7,220,940</u>

Increase in FY 17 Budget:

Proposed FY 17	7,220,940
Budgeted FY 16	5,950,000
	<u>1,270,940</u>

## 10 Year History

	Budgeted	Actual
FY 06	3,400,000	4,877,840
FY 07	4,900,000	5,307,237
FY 08	6,500,000	5,130,116
FY 09	6,000,000	4,783,973
FY 10	4,600,000	4,301,959
FY 11	4,600,000	5,007,502
FY 12	4,600,000	5,482,143
FY 13	5,000,000	5,934,867
FY 14	5,000,000	5,993,996
FY 15	5,950,000	6,426,611
FY 16	5,950,000	



## Meals Tax (012100)

		Collected/Budgeted Growth
Collected FY 12	4,007,088	
Collected FY 13	4,150,028	3.57%
Collected FY 14	4,307,699	3.80%
Collected FY 15	4,533,280	5.24%
Budgeted FY 16	4,326,000	-4.57%

Current level of growth

5% ← 4,759,944

5%

4,997,941

Increase in FY 17 Budget:

Proposed FY 17

Budgeted FY 16

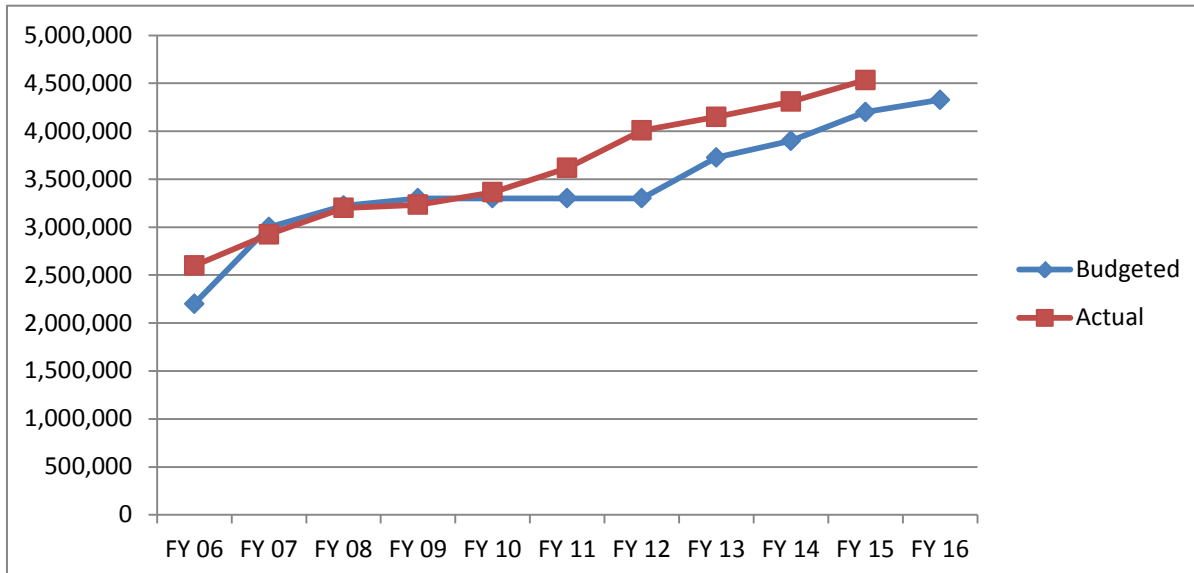
4,997,941

4,326,000

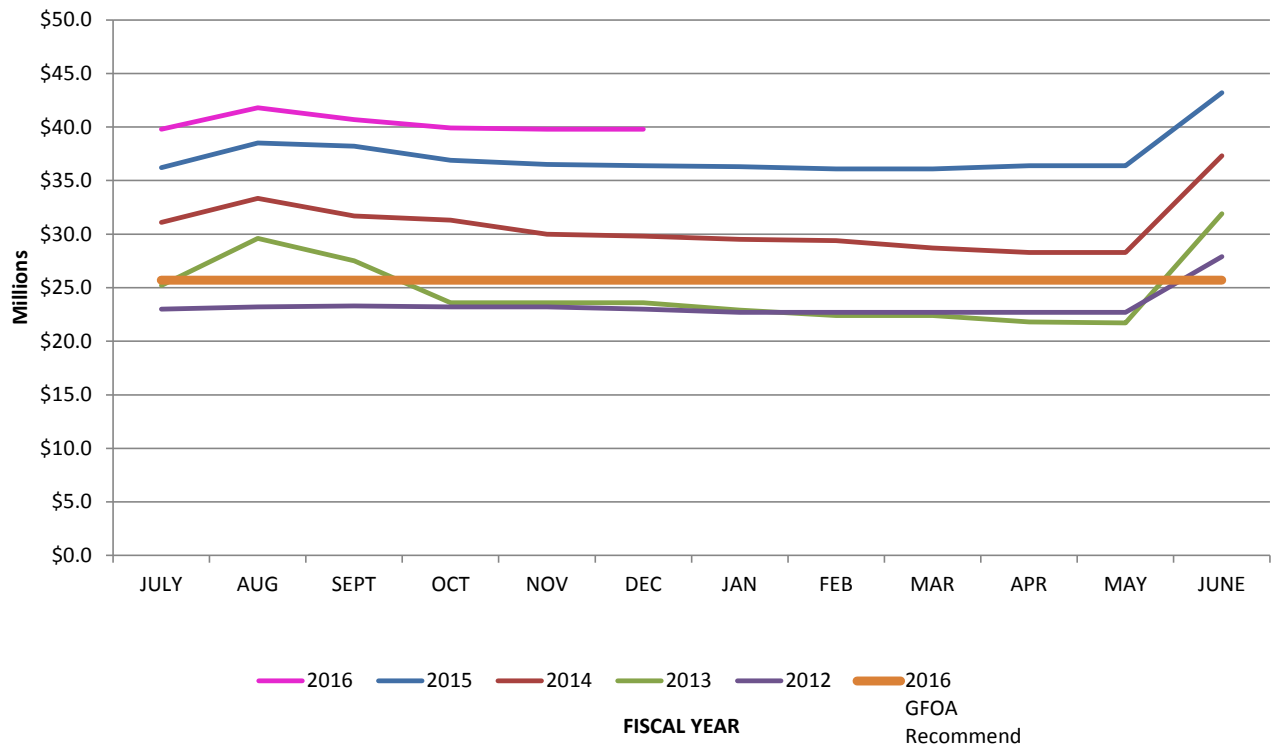
671,941

## 10 Year History

	Budgeted	Actual
FY 06	2,200,000	2,598,673
FY 07	3,000,000	2,924,109
FY 08	3,223,000	3,199,968
FY 09	3,300,000	3,233,544
FY 10	3,300,000	3,363,581
FY 11	3,300,000	3,617,669
FY 12	3,300,000	4,007,088
FY 13	3,725,000	4,150,028
FY 14	3,900,000	4,307,699
FY 15	4,200,000	4,533,280
FY 16	4,326,000	



## Unassigned Fund Balance



### Unreserved Fund Balance Comments

Current Level	39.8 million
GFOA Recommended level & County Policy	<u>25.7 million</u>
Difference	14.1 million
Proposed Capital Funding from Fund Balance	7 million
Allocation of Proposed Capital Funding:	
Schools ( 57%)	4 million
Non-Schools (43%)	3 million
(Above numbers are rounded)	

Position Allocation Chart  
FY2016

Department	Funded	Unfunded	Total
Title			
Clerk's Office			
Clerk	1		
Deputy Clerk	2		
Sr Records Clerk	1		
Records Clerk	4		
Scanning Technician	1		
Totals	9	0	9
Comm of the Revenue			
COR	1		
Real Estate Assessment/Chief Deputy	1		
Business Division Chief	1		
Personal Property Supervisor	1		
Auditor	1		
Assessor	4		
Data Collector	2		
GIS Analyst	1		
Administrative Assistant	2		
Sr Account Clerk	3		
Account Clerk	4		
Totals	21	0	21
Commonwealth's Attorney's Office			
Commonwealth's Attorney	1		
Deputy Commonwealth's Attorney	1		
Assistant Commonwealth's Attorney	4		
Sr Legal Secretary	1		
Legal Secretary	4		
Secretary	1		
Victim Witness			
Program Coordinator	1		
Secretary	1		
Totals	14	0	14
County Administrator's Office			
County Administrator	1		
Assistant County Administrator	1		
Deputy County Administrator	1		
Public Information Officer	1		
CSA Coordinator	1		
Administrative Assitant	2		
Secretary	1		
Totals	8	0	8



Position Allocation Chart  
FY2016

Department	Funded	Unfunded	Total
County Attorney's Office			
County Attorney	1		
Legal Secretary	1		
<b>Totals</b>	<b>2</b>	<b>0</b>	<b>2</b>
Economic Development			
EDA Director	1		
Existing Business Coord	1		
Marketing Manager	1		
<b>Totals</b>	<b>3</b>	<b>0</b>	<b>3</b>
Extension Office			
Extension Tech	1		
Secretary	1		
<b>Totals</b>	<b>2</b>	<b>0</b>	<b>2</b>
Finance Department			
Finance Director	1		
Assistant Finance Director	1		
Payroll Manager	1		
Risk Manager	1		
Accounting Supervisor	1		
Finance Specialist	2		
<b>Totals</b>	<b>7</b>	<b>0</b>	<b>7</b>
Fire & Rescue Department			
Fire Chief	1		
Deputy Chief	3		
Captain	3		
Lieutenant	13		
F&R Specialist	30		
F&R Technician	12		
Firefighter/EMT	28		
Administrative Assistant	1		
Sr Secretary	1		
Secretary	2		
Resource Management Specialist	1		
EMS Billing Manager	1		
<b>Totals</b>	<b>96</b>	<b>0</b>	<b>96</b>
HR Department			
HR Director	1		
Benefits Administrator	1		
HR Generalist	1		
HR Specialist	1		

Position Allocation Chart  
FY2016

Department	Funded	Unfunded	Total
HR Assistant	1		
<b>Totals</b>	<b>5</b>	<b>0</b>	<b>5</b>
IT Department			
IT Director	1		
Network Operations Manager	1		
GIS Manager	1		
MIS Manager	1		
Network Support Tech	1		
Systems Analyst	1		
PC Tech	2		
GIS Analyst	1		
GIS Tech	1		
MIS Sr Program Coordinator	1		
MIS Program Coordinator	1		
MIS Programmer	1		
Administrative Assistant	1		
<b>Totals</b>	<b>14</b>	<b>0</b>	<b>14</b>
Juvenile Probation Office			
Juvenile Probation Officer	2		
<b>Totals</b>	<b>2</b>	<b>0</b>	<b>2</b>
Maintenance			
Maintenance Supervisor	1		
Maintenance Specialist	1		
Head Custodian	1		
Custodian	6		
<b>Totals</b>	<b>9</b>	<b>0</b>	<b>9</b>
NRADC			
Superintendent	1		
Assistant Superintendent/Major			
Captain	4		
Lieutenant	8		
Sergeant	19		
Correctional Officers	113		
Correctional Systems Officer	1		
Correctional Systems Tech	1		
Booking Tech	3		
Property Clerk	1		
Administrative Assistant	1		
Business Manager	1		
Accounting Tech	2		
Account Clerk	1		

Position Allocation Chart  
FY2016

Department	Funded	Unfunded	Total
Nursing Director	1		
LPN	11		
CHA	1		
Mental Health Director	1		
Mental Health Consultant	1		
Maintenance Supervisor	1		
Maintenance Tech	4		
Food Service Manger	1		
Food Service Supervisor	7		
Inmate Program Coordinator	1		
Inmate Program Specialist	4		
PTS/Probation Officer	4		
Secretary	1		
Records Supervisor/LIDS Tech	1		
Records Clerk	6		
	201	0	201
NRADC/DCS			
Court Service Director	1		
Chief CC	1		
Administrative Assistant	1		
Sr Probation Case Officer	1		
PTS/Probation Officer	2		
ASAP Case Manager	4		
Records Clerk	2		
	12	0	12
Totals	213	0	213
Parks & Recreation Department			
P&R Director	1		
Park Superintendent	1		
Recreation Superintendent	1		
Operations Manager	1		
Marketing Coordinator	1		
Administrative Assistant	2		
Park & Stewardship Planner	1		
Park Manager	2		
Program Supervisor	5		
BASICRec Manager	1		
Recreation Tech	10		
Registration Specialist	2		
Maintenance Specialist	1		
Park Tech	2		
Park Caretaker	9		
Totals	40	0	40

Position Allocation Chart  
FY2016

Department	Funded	Unfunded	Total
Planning & Development			
Planning Director	1		
Assistant Planning Director	1		
Assistant Transportation Director	1		
Sr Planner	1		
Zoning Administrator	1		
Zoning Inspector	1		
GIS Tech	1		
Administrative Assistant	1		
Sr Secretary	1		
Secretary	2		
<b>Totals</b>	<b>11</b>	<b>0</b>	<b>11</b>
Public Safety Communications			
PSC Director	1		
Secretary	1		
Communications Supervisor	1		
Communications Officer	13		
<b>Totals</b>	<b>16</b>	<b>0</b>	<b>16</b>
Public Works			
Administration			
Assistant PW Director	1		
Administrative Assistant	1		
Project Manager	1		
Environmental Inspector	1		
Animal Shelter			
Manager	1		
Assistant Manager	1		
Secretary	1		
Sr Animal Caretaker	3		
Animal Caretaker	1		
Inspections			
Building Code Official/Administrator	1		
Sr Design Review Specialist	1		
Design Review Specialist	1		
Sr Inspector	3		
Inspector	4		
Permit Manager	1		
Sr Permit Tech	1		
Permit Tech	1		
Secretary	1		

Position Allocation Chart  
FY2016

Department	Funded	Unfunded	Total
Landfill			
Public Works Director	1		
Landfill Manager	1		
Operations Spervisor	1		
Environmental Manager	1		
Environmental Tech	1		
Convenience Site Supervisor	1		
Gas Plant Operator	1		
Heavy Equipment Mechanic	1		
Maintenance Mechanic Asst	1		
Sr Landfill Tech	3		
Landfill Tech	7		
Landfill Spotter	2		
Laborer	3		
Administrative Assistant	1		
Scale Operator	2		
Recycling			
Solid Waste Manager	1		
Solid Waste Coordinator	1		
Shawneeland			
Shawneeland Manager	1		
Sr Motor Equipment Operator	2		
Motor Equipment Operator	2		
Secretary	1		
<b>Totals</b>	<b>60</b>	<b>0</b>	<b>60</b>
Registrar's Office			
Registrar	1		
Assistant Registrar	1		
<b>Totals</b>	<b>2</b>	<b>0</b>	<b>2</b>
Sheriff's Office			
Sheriff	1		
Major	1		
Captain	4		
1st Lieutenant	1		
Lieutenant	9		
Sergeant	3		
Investigator	18		
Deputy	81		
Communications Operations Supervisor	1		
Communications Officer	3		

Position Allocation Chart  
FY2016

Department	Funded	Unfunded	Total
Crime Analyst	1		
Evidence Clerk	1		
Administrative Assistant	2		
Sr Secretary	1		
Records Clerk	7		
<b>Totals</b>	<b>134</b>	<b>0</b>	<b>134</b>
Treasurer's Office			
Treasurer	1		
Deputy Treasurer	2		
Revenue Analyst	1		
Sr Collector	1		
Sr Account Analyst	1		
Collector	1		
Account Analyst	3		
Mortgage Specialist	1		
<b>Totals</b>	<b>11</b>	<b>0</b>	<b>11</b>
Winchester Regional Airport			
Airport Director	1		
Operations Supervisor	1		
Maintenance Tech	2		
Flight Line Tech	4		
Account Clerk	1		
Customer Service Rep	2		
<b>Totals</b>	<b>11</b>	<b>0</b>	<b>11</b>
<b>Grand Total</b>	<b>690</b>	<b>0</b>	<b>690</b>