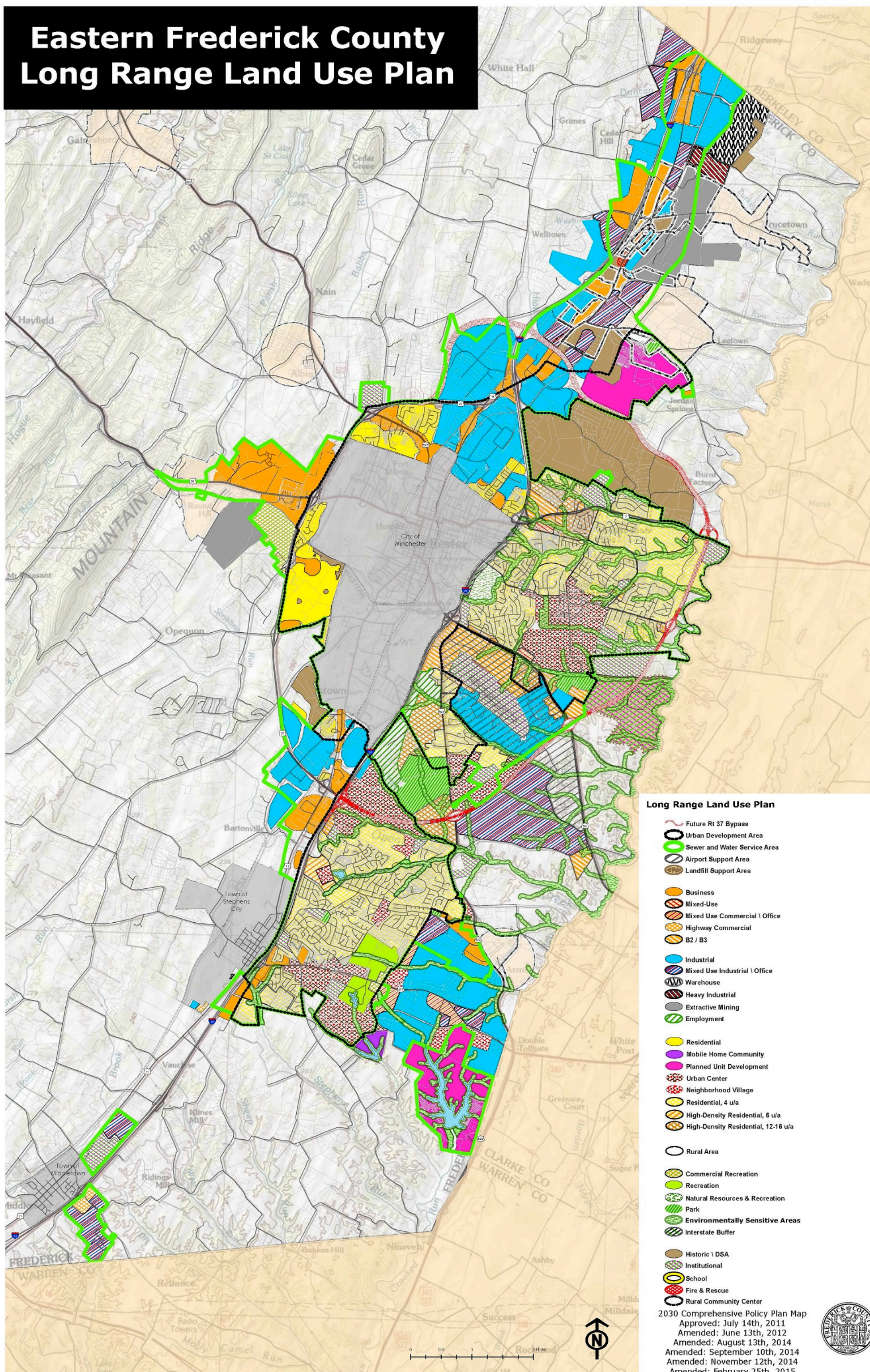


# Eastern Frederick County Long Range Land Use Plan



## Long Range Land Use Plan

- Future Rt 37 Bypass
  - Urban Development Area
  - Sewer and Water Service Area
  - Airport Support Area
  - Landfill Support Area
  - Business
  - Mixed-Use
  - Mixed Use Commercial \ Office
  - Highway Commercial
  - B2 / B3
  - Industrial
  - Mixed Use Industrial \ Office
  - Warehouse
  - Heavy Industrial
  - Extractive Mining
  - Employment
  - Residential
  - Mobile Home Community
  - Planned Unit Development
  - Urban Center
  - Neighborhood Village
  - Residential, 4 u/a
  - High-Density Residential, 6 u/a
  - High-Density Residential, 12-16 u/a
  - Rural Area
  - Commercial Recreation
  - Recreation
  - Natural Resources & Recreation
  - Park
  - Environmentally Sensitive Areas
  - Interstate Buffer
  - Historic \ DSA
  - Institutional
  - School
  - Fire & Rescue
  - Rural Community Center
- 2030 Comprehensive Policy Plan Map  
Approved: July 14th, 2011  
Amended: June 13th, 2012  
Amended: August 13th, 2014  
Amended: September 10th, 2014  
Amended: November 12th, 2014  
Amended: February 25th, 2015

