

Area Plan

Round Hill Community Land Use Plan

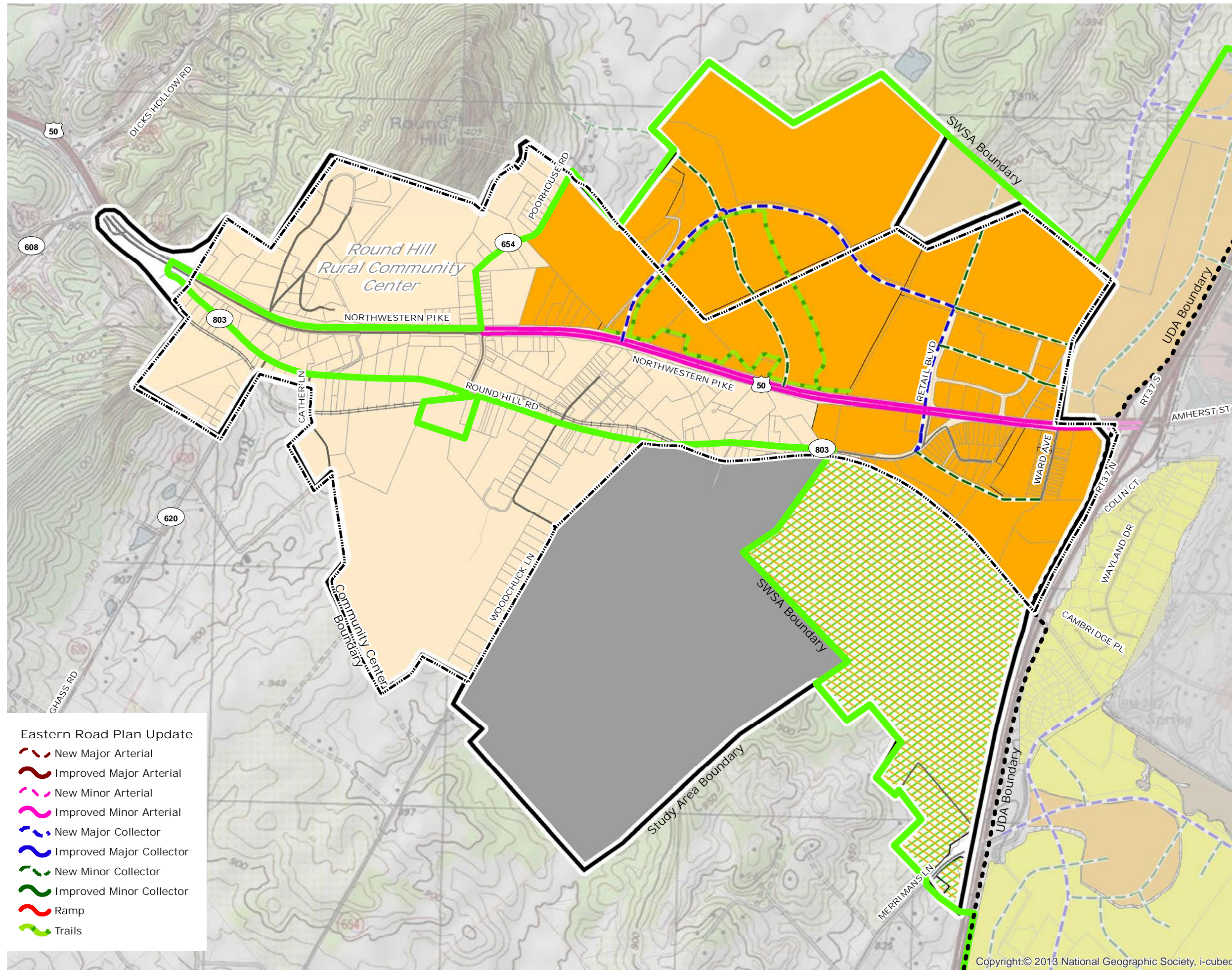
- Urban Development Area
- Sewer and Water Service Area

Land Use Legend

- Business
- Mixed-Use
- Mixed Use Commercial \ Office
- Highway Commercial
- Industrial
- Warehouse
- Heavy Industrial
- Mixed Use Industrial \ Office
- Extractive Mining
- Residential
- Planned Unit Development
- Mixed Use Age Restricted
- Urban Center
- Neighborhood Village
- Commercial Recreation
- Recreation
- Natural Resources & Recreation
- Park
- DSA - Historic Resources & Recreation
- Fire & Rescue
- Institutional
- School
- RuralCommunityCenter

0 0.125 0.25 0.5 Miles

2030 Comprehensive Policy Plan Map
Approved: July 14th, 2011



Eastern Road Plan Update

- New Major Arterial
- Improved Major Arterial
- New Minor Arterial
- Improved Minor Arterial
- New Major Collector
- Improved Major Collector
- New Minor Collector
- Improved Minor Collector
- Ramp
- Trails