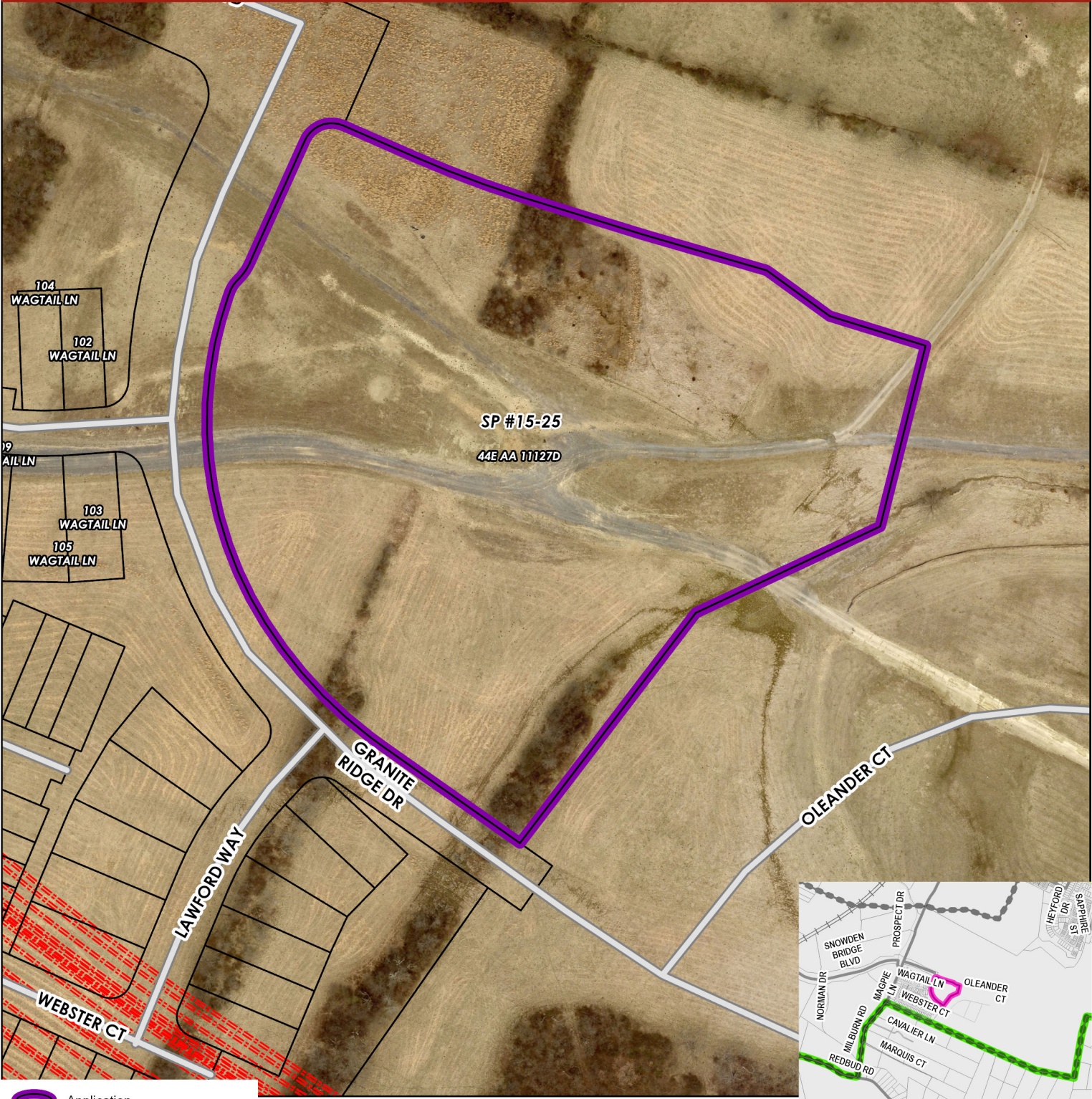


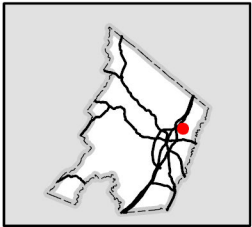
SP # 15 - 25: Stephenson Village II Active Adult Recreation Center Revision

PIN: 54 - A - 93

Reduce Size of Pool, Remove Proposed Retaining Wall, and Adjust Grading
Location Map



- Application
- Sewer and Water Service Area
- Parcels
- Future Rt 37 Bypass



0 85 170 340 Feet