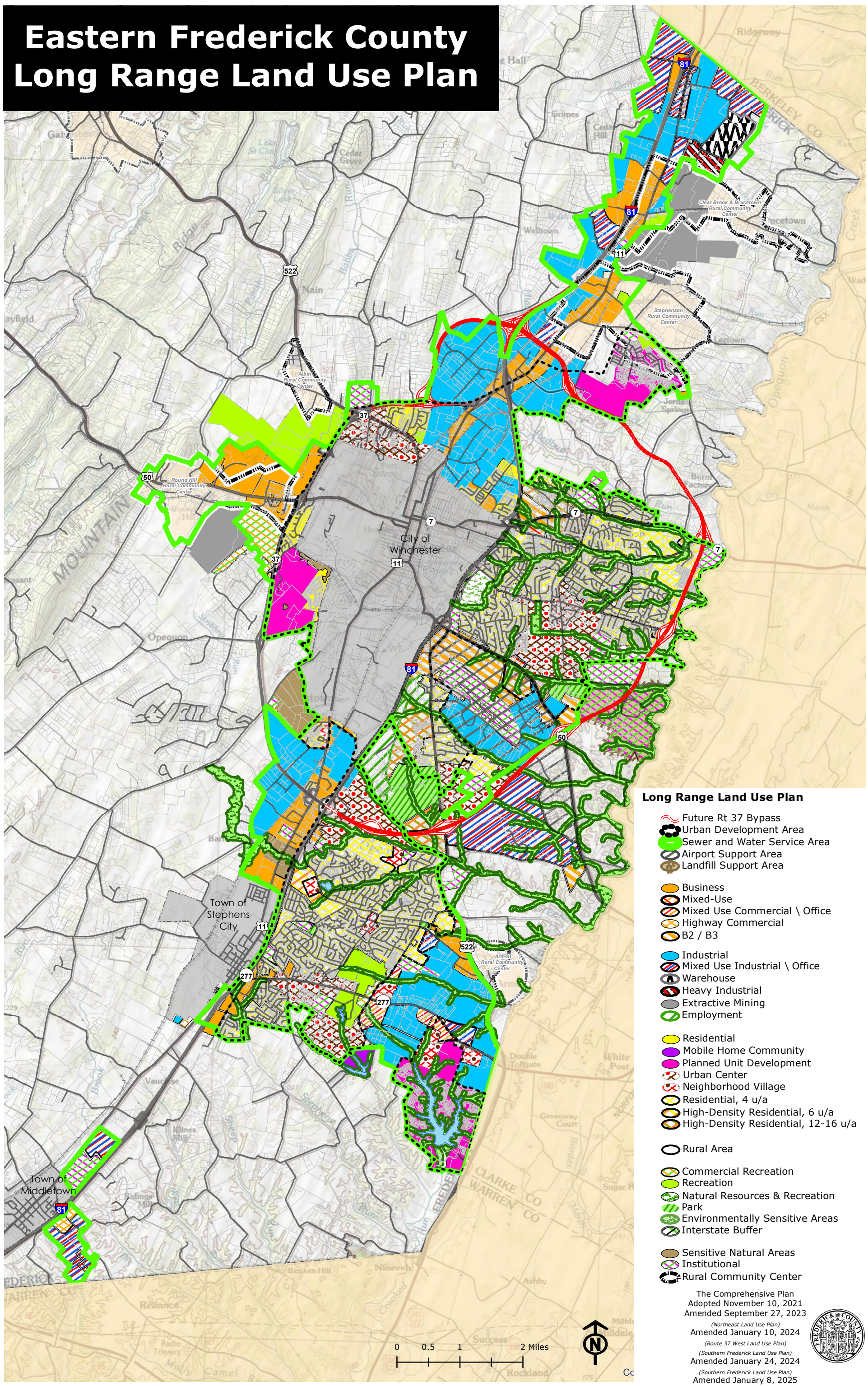


# Eastern Frederick County Long Range Land Use Plan



- Long Range Land Use Plan**
- Future Rt 37 Bypass
  - Urban Development Area
  - Sewer and Water Service Area
  - Airport Support Area
  - Landfill Support Area
  - Business
  - Mixed-Use
  - Mixed Use Commercial \ Office
  - Highway Commercial
  - B2 / B3
  - Industrial
  - Mixed Use Industrial \ Office
  - Warehouse
  - Heavy Industrial
  - Extractive Mining
  - Employment
  - Residential
  - Mobile Home Community
  - Planned Unit Development
  - Urban Center
  - Neighborhood Village
  - Residential, 4 u/a
  - High-Density Residential, 6 u/a
  - High-Density Residential, 12-16 u/a
  - Rural Area
  - Commercial Recreation
  - Recreation
  - Natural Resources & Recreation
  - Park
  - Environmentally Sensitive Areas
  - Interstate Buffer
  - Sensitive Natural Areas
  - Institutional
  - Rural Community Center

The Comprehensive Plan  
Adopted November 10, 2021  
Amended September 27, 2023  
(Northeast Land Use Plan)  
Amended January 10, 2024  
(Route 37 West Land Use Plan)  
(Southern Frederick Land Use Plan)  
Amended January 24, 2024  
(Southern Frederick Land Use Plan)  
Amended January 8, 2025  
(Western Frederick Land Use Plan)

