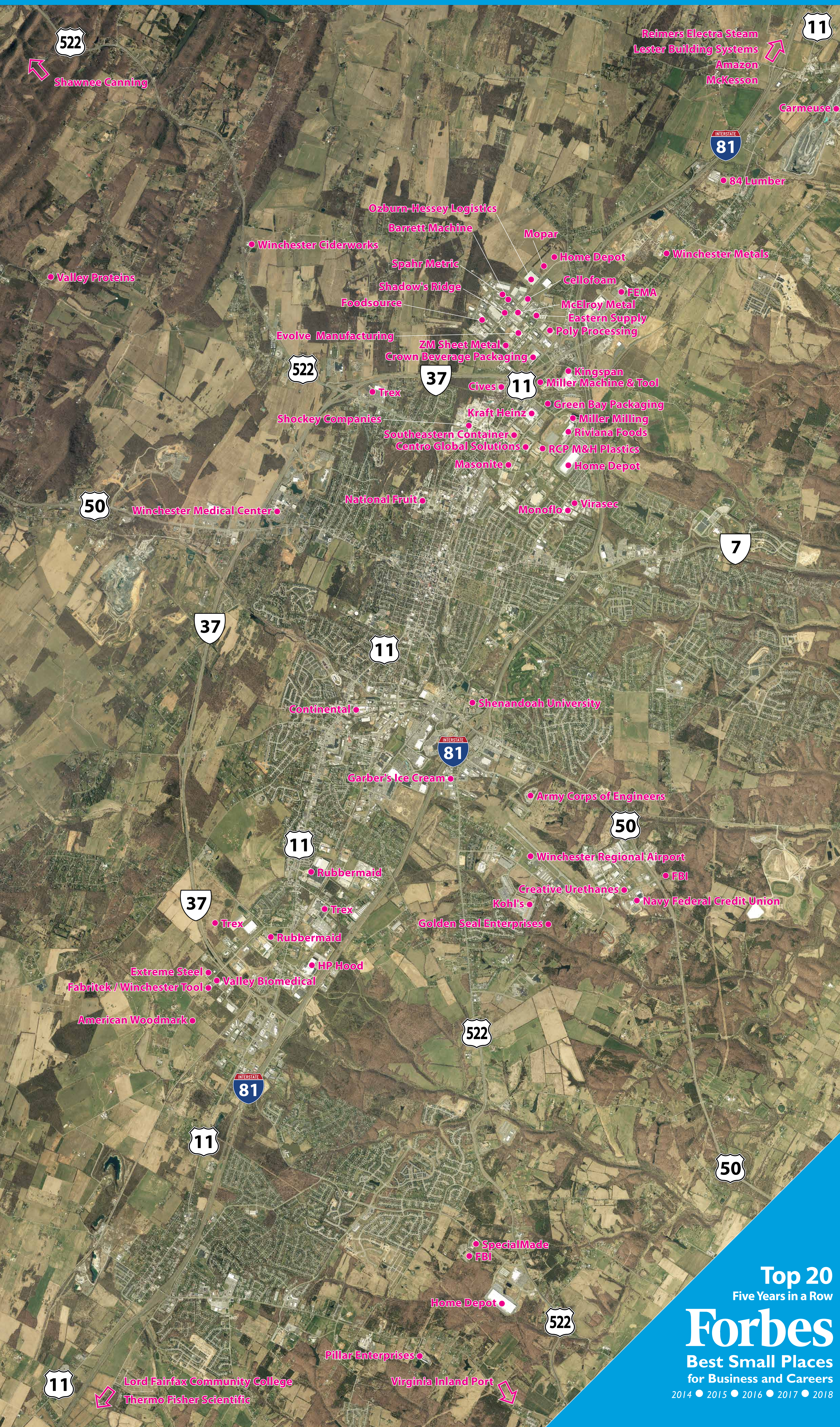
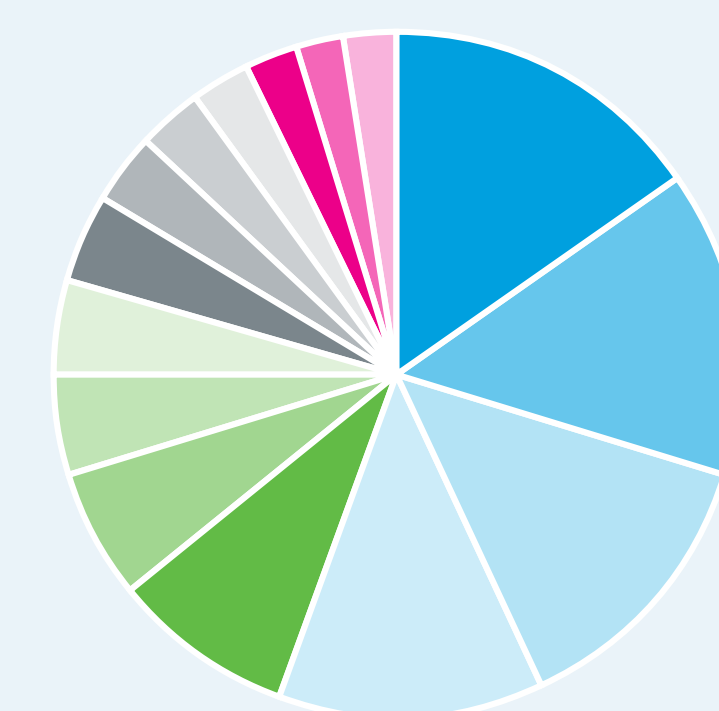


Frederick^{CO.}VA



Workforce



45-Mile Radius
373,859 Labor Force
39% Associate's Degree or Higher*

Source: JobsEQ | Updated 9/2019
* Winchester VA-WV MSA

Winchester-Frederick Co.

EMPLOYMENT BY INDUSTRY SECTOR

- Health & Social Assistance — 15.3%
- Government — 14.6%
- Retail — 13.1%
- Manufacturing — 12.7%
- Accommodation & Food Services — 8.4%
- Transportation Warehousing — 6.1%
- Finance & Insurance — 4.58%
- Construction — 4.3%
- Administrative/Support & Waste Management — 4.2%
- Other — 3.5%
- Professional, Scientific & Technical Services — 2.9%
- Wholesale Trade — 2.7%
- Other Services (Except Public Administration) — 2.5%
- Management of Companies — 2.4%
- Educational Services — 2.3%

Source: Virginia Employment Commission 2019, IQ

Employers

Targeted Sectors

Advanced Manufacturing

Headquarters & Back Office

Professional & Creative Services

Food Processing & Agribusiness

Sub-Sectors/Who's Already Here?

Plastics • Engineered Wood • Fabricated Metal • BioScience • Supportive Logistic Consulting & Trucking Operations
M&H Plastics (manufacturing), Trex Company (manufacturing), HP Hood (manufacturing), Fabritek/Winchester Tool (manufacturing), Ozburn-Hessey Logistics (logistics)

Corporate Headquarters • Back Office • Service Centers
Navy Federal Credit Union (contact center), Trex Company (HQ, manufacturing), American Woodmark (HQ, product development, customer care, IT)

Information & Communication Technology • Engineering • Cyber Security • Data Centers
FEMA (federal government), Shockey Companies (engineering & site development), FBI (federal government), Golden Seal Enterprises (executive security & training)

Specialty Foods • Packaged Foods • Beverages • Perishable Foods
Riviana Foods (manufacturing), Kraft Heinz (manufacturing), Shawnee Canning (manufacturing), HP Hood (manufacturing), Winchester Ciderworks (manufacturing)

Why Frederick County

Central & Essential

The Frederick County market serves a range of industries – from manufacturers and financial institutions, to IT companies and startups – that benefit from our strategic geographic advantages in the heart of the East Coast.

Dedicated Workforce & Standard of Excellence

Frederick County draws from a skilled workforce that is nurtured at all levels. Labor supply for Frederick County is drawn from a 45-mile radius across 10 counties in Virginia, Maryland and West Virginia. The total labor supply is more than 370,000 professionals, 89.1% of which are high school graduates (or higher); 39.2% hold an associate's degree or higher.

Recognized Performance & Efficiency

With an extensive and diverse business portfolio, \$437 million in capital expenditures between 2016-18, and ongoing partnerships between the business community and educational institutions, we have consistently recruited and retained leading companies.

Business Support at Every Step

With a diversity of companies, consistent performance and signature workforce development programs, we continue to shine as one of Virginia's finest regions, leaning on numerous resources to ensure the success of our community.

YesFrederickVA.com

Last Updated: October 2019

Top 20
Five Years in a Row
Forbes
Best Small Places
for Business and Careers
2014 • 2015 • 2016 • 2017 • 2018

Frederick^{CO.}VA
ECONOMIC DEVELOPMENT AUTHORITY

45 E. Boscawen St. Winchester, VA 22601
(540) 665-0973 | info@YesFrederickVA.com
Your Move. Our Commitment.