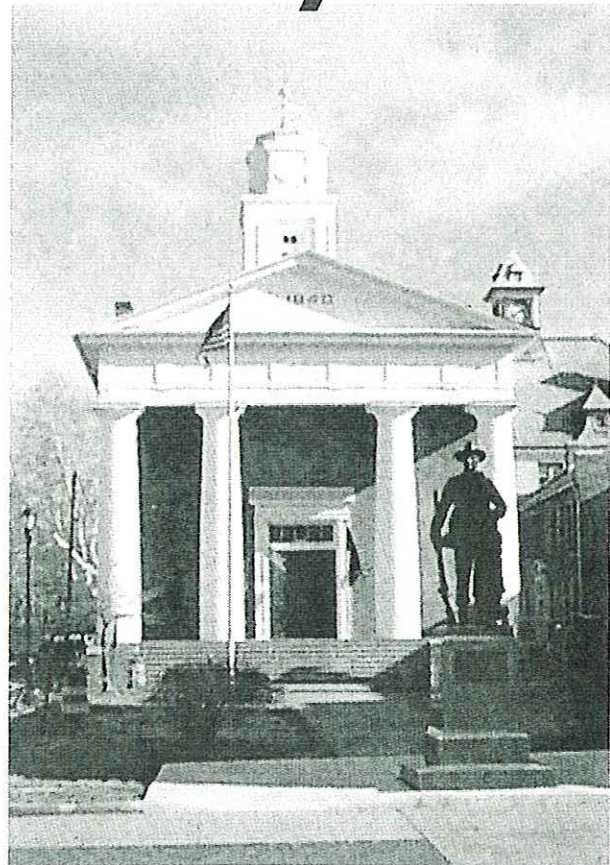


**2003  
Comprehensive  
Policy Plan**



**Frederick County,  
Virginia**

## Acknowledgments

The 2003 Frederick County Comprehensive Policy Plan was adopted by the Frederick County Board of Supervisors on January 28, 2004, upon the recommendation of the Frederick County Planning Commission on November 19, 2003.

### Board of Supervisors

Richard C. Shickle, Chairman	Barbara E. Van Osten, Vice Chairman
W. Harrington Smith, Jr.	Gary W. Dove
Bill M. Ewing	Lynda J. Tyler
Gina A. Forrester	

### Planning Commission

Charles S. DeHaven, Jr., Chairman	Roger L. Thomas, Vice Chairman
William C. Rosenberry	Cordell Watt
Greg L. Unger	Gene E. Fisher
Robert A. Morris	John Light
George J. Kriz	Charles E. Triplett
Rick C. Ours	Pat Gochenour
Marie F. Straub	

Special appreciation is extended to the Frederick County Comprehensive Plans and Programs Subcommittee for their hard work and dedication in drafting the 2003 Comprehensive Policy Plan.

### Comprehensive Plans and Programs Subcommittee

John Light, Chairman	Charles S. DeHaven, Jr.
Marjorie H. Copenhaver	Sue Ann Teal
Roger Thomas	Jay S. Banks
Robert A. Morris	James W. Golladay, Jr.
Todd Shenk	William C. Rosenberry
George J. Kriz	Diane S. Kearns
Pat Gochenour	June Wilmot

*Table of Contents*

---

**Chapter 1 : Introduction** ..... 1 - 1

**Chapter 2 : History** ..... 2 - 1

    Historic Preservation ..... 2 - 4

    Battlefield Action Program Summary ..... 2 - 8

    Historic Preservation Policy ..... 2 - 11

**Chapter 3 : Population and Housing** ..... 3 - 1

    Population ..... 3 - 1

    Growth in Housing ..... 3 - 2

    Population Distribution ..... 3 - 4

    Housing ..... 3 - 4

    Projections ..... 3 - 5

    Conclusions ..... 3 - 6

    Population and Housing Policy ..... 3 - 7

**Chapter 4 : Economy** ..... 4 - 1

    Winchester-Frederick County Economic Development Commission ..... 4 - 1

    Current Program Areas ..... 4 - 2

    Economic Policy ..... 4 - 4

**Chapter 5 : Environment** ..... 5 - 1

    Physical Characteristics ..... 5 - 1

    Water Supply ..... 5 - 3

    Stormwater Management ..... 5 - 4

    Carrying Capacity ..... 5 - 7

    Environmental Protection ..... 5 - 8

    Environmental Policy ..... 5 - 8

**Chapter 6 : Land Use** ..... 6 - 1

    Urban Development Area ..... 6 - 1

    Suburban Residential Land Uses ..... 6 - 6

    Business and Industrial Land Uses ..... 6 - 8

    Business Corridors ..... 6 - 13

        Route 50 East Corridor ..... 6 - 17

        Route 11 South Corridor ..... 6 - 23

        Stephens City/Frederick County Future Land Use ..... 6-28.1

*Table of Contents*

---

Route 7 Corridor .....	6 -29
Northeast Frederick Land Use Plan .....	6 - 34
Route 37 West Land Use Plan .....	6 -39
Southern Frederick Land Use Plan .....	6-42.1
Rural Community Centers .....	6 - 44
Round Hill Land Use Plan .....	6 - 47
Rural Areas .....	6 - 55
Planned Communities .....	6 - 60
Airport Support Area .....	6 - 61
Land Use Policy .....	6 - 67
General Policies .....	6 - 67
Urban Development Area .....	6 - 68
Suburban Residential Areas .....	6 - 69
Business and Industrial Areas .....	6 - 71
Business Corridors .....	6 - 72
Rural Community Centers .....	6 - 74
Rural Areas .....	6 - 76
Planned Communities .....	6 - 79
<b>Chapter 7 : Transportation .....</b>	<b>7 - 1</b>
Existing Road System .....	7 - 1
Traffic Volumes .....	7 - 2
Accidents .....	7 - 2
Critical Intersections and Corridors .....	7 - 2
Other Transportation Systems .....	7 - 3
Road Classification .....	7 - 3
Road Characteristics .....	7 - 4
Future Road Improvements .....	7 - 6
Transportation Policy .....	7 -12
<b>Chapter 8 : Community Facilities and Services .....</b>	<b>8 - 1</b>
Schools .....	8 - 1
Emergency Services .....	8 - 4
Airport .....	8 - 6
Handley Library .....	8 - 7
County Offices .....	8 - 8
Refuse Collection, Landfill, and Recycling .....	8 - 8
Sewer and Water Facilities .....	8 - 9
Capital Improvements Plan .....	8 -15
Facility Cost Impacts .....	8 -16
Community Facility and Service Policy .....	8 -18

*Table of Contents*

---

<b>Chapter 9 : Parks and Recreation</b> .....	9 - 1
Facilities .....	9 - 1
Programs .....	9 - 2
Citizen Participation .....	9 - 3
Future Demands .....	9 - 3
Area Standards .....	9 - 4
Neighborhood Park .....	9 - 5
Community Park .....	9 - 6
Regional Park .....	9 - 7
Recreation Centers .....	9 - 8
Existing Regional Park Facilities .....	9 - 9
Conclusions .....	9 -11
Recreation Policy .....	9 -11
<b>Chapter 10 : Action Program</b> .....	10 - 1
Comprehensive Policy Goals .....	10 - 1
Proposed Actions .....	10 - 4
Continuous Activities .....	10 - 7

## *Table of Contents*

---

### **Tables**

Table 1.	Battlefield Action Program Summary . . . . .	2 - 8
Table 2.	Population Counts in Frederick County, 1900-1990 . . . . .	3 - 1
Table 3.	Households and Average Household Size, Frederick County . . . . .	3 - 5
Table 4.	Population Projections for Frederick County . . . . .	3 - 5
Table 5.	Projected New Dwellings Needed . . . . .	3 - 6
Table 6.	Reserved	
Table 7.	Reserved	
Table 8.	Potential Dwellings, Size in Acres, and Zoning of Drainage Areas in the Urban Development Area . . . . .	6 - 4
Table 9.	Potential Dwellings, Size in Acres, and Zoning of Drainage Areas outside the Urban Development Area . . . . .	6 - 5
Table 10.	Suburban Land Use - Estimated Current and Projected Number of Homes and Acreage . . . . .	6 - 7
Table 11.	Business and Industrial Land in Eastern Frederick County . . . . .	6 - 8
Table 12.	Comparative Facts and Figures of Rural Community Centers . . . . .	6 - 46
Table 13.	Level of Service- Categories and Descriptions . . . . .	7 - 5
Table 14.	Reserved	
Table 15.	Facility Needs Based on Minimum Standards Established in the 1996 Virginia Outdoor Plan . . . . .	9 - 10

### **Figures**

Figure 1.	A Planning Process for Frederick County . . . . .	1 - 3
Figure 2.	Reserved	
Figure 3.	Idealized Interchange Development Pattern . . . . .	6 - 10
Figure 4.	Idealized Intersection Design . . . . .	6 - 15
Figure 5.	Landscape Screening Examples . . . . .	6 - 16
Figure 6.	Route 50 East Zoning by Acreage . . . . .	6 - 18
Figure 7.	Route 11 South Zoning by Acreage . . . . .	6 - 23
Figure 8.	Route 11 South Corridor - Four Lanes with Buffer and Setbacks . . . . .	6 - 25
Figure 9.	Methods to Preserve Route 11 South Corridor Appearance . . . . .	6 - 26
Figure 10.	Route 7 Zoning by Acreage . . . . .	6 - 29
Figure 11.	Reserved	
Figure 12.	Design Principles to be Established for Round Hill . . . . .	6 - 48
Figure 13.	Round Hill Community : Number of Lots by Acreage . . . . .	6 - 49
Figure 14.	Farmland Acreage by Type . . . . .	6 - 56

*Table of Contents*

---

Figure 15.	New Lots Created Under 20 Acres . . . . .	6 - 58
Figure 16.	Reserved	
Figure 17.	Total New Connections (Water and Sewer) . . . . .	8 - 13
Figure 18.	Opequon Treatment Plant; Sewer Flow versus Capacity . . . . .	8 - 14
Figure 19.	Parkins Mill Treatment Plant; Flow versus Capacity . . . . .	8 - 15

**Maps**

Civil War Battlefields and Sites . . . . .	2 - 6
Possible Historic Districts . . . . .	2 - 10
Neighborhoods . . . . .	3 - 3
Geologic Formations and Aquifers . . . . .	5 - 2
Physical Characteristics . . . . .	5 - 5
Drainage Areas . . . . .	6 - 3
Route 50 East Corridor: Future Land Use and Present Zoning . . . . .	6 - 21
Route 11 South: Zoning and Future Land Use . . . . .	6 - 27
Stephens City/Frederick County Future Land Use . . . . .	6-28.3
Route 7 Corridor: Future Land Use and Present Zoning . . . . .	6 - 31
Northeast Frederick Land Use Plan . . . . .	6 - 38
Route 37 West Land Use Plan . . . . .	6 - 41
Southern Frederick Land Use Plan . . . . .	6-42.9
Round Hill Community Land Use Plan . . . . .	6 - 51
Airport Support Area . . . . .	6 - 63
Current Land Use . . . . .	6 - 65
Eastern Frederick County Long Range Land Use Plan . . . . .	6-66.1
VDOT Functional Classification Plan . . . . .	7 - 9
Eastern Road Plan . . . . .	7 - 15
Frederick County Bicycle Plan . . . . .	7 - 17
Schools . . . . .	8 - 3
Sewer and Water Facility Plan . . . . .	8 - 11
Community Facilities and Services . . . . .	8 - 21